

SPEED ZONE ORDINANCE # 640

AN ORDINANCE ALTERING THE PRIMA FACIE SPEED LIMITS ESTABLISHED FOR VEHICLES UNDER THE PROVISIONS OF § 545.356, TEXAS TRANSPORTATION CODE, UPON THE BASIS OF AN ENGINEERING AND TRAFFIC INVESTIGATION, UPON CERTAIN STREETS AND HIGHWAYS, OF PARTS THEREOF, WITHIN THE CORPORATE LIMITS OF THE CITY OF WEST COLUMBIA, AS SET OUT IN THIS ORDINANCE; AND PROVIDING A PENALTY OF A FINE NOT TO EXCEED \$200 FOR THE VIOLATION OF THIS ORDINANCE.

WHEREAS, § 545.356, Vernon's Texas Civil Statutes, provides that whenever the governing body of the city shall determine upon the basis of an engineering and traffic investigation that any prima facie speed therein set forth is greater or less than is reasonable or safe under the conditions found to exist at any intersection or other place or upon any part of a street or highway within the city, taking into consideration the width and condition of the pavement and other circumstances on such portion of said street or highway, as well as the usual traffic thereon, said governing body may determine and declare a reasonable and safe prima facie speed limit thereat or thereon by the passage of an ordinance, which shall be effective when appropriate signs giving notice thereof are erected at such intersection or other place or part of the street or highway;

NOW, THEREFORE BE IT ORDAINED BY THE CITY COUNCIL OF THE CITY OF WEST COLUMBIA, TEXAS:

Section 1. Upon the basis of an engineering and traffic investigation heretofore made as authorized by the provisions of § 545.356, Texas Transportation Code, the following prima facie speed limits hereafter indicated for vehicles are hereby determined and declared to be reasonable and safe; and such speed limits are hereby fixed at the rate of speed indicated for vehicles traveling upon the named streets and highways, or parts thereof, described as follows:

Along SH 35 from the centerline of SH 36 to the southwestern limit of the City of West Columbia, a distance of approximately 0.392 mile, the speed limit shall be 45 MPH.

Along SH 35 from 1584 feet northwestern of centerline of SH 36 to the centerline of SH 36, a distance of approximately 0.300 mile, a school zone, the speed limit shall be "20 MPH WHEN FLASHING".

Section 2. Any person violating any of the provisions of this ordinance shall be deemed guilty of a misdemeanor and upon conviction thereof shall be fined in any sum not more than Two Hundred Dollars (\$200).

PASSED AND APPROVED THIS 11th day of January, 2016

ATTEST:

APPROVED:

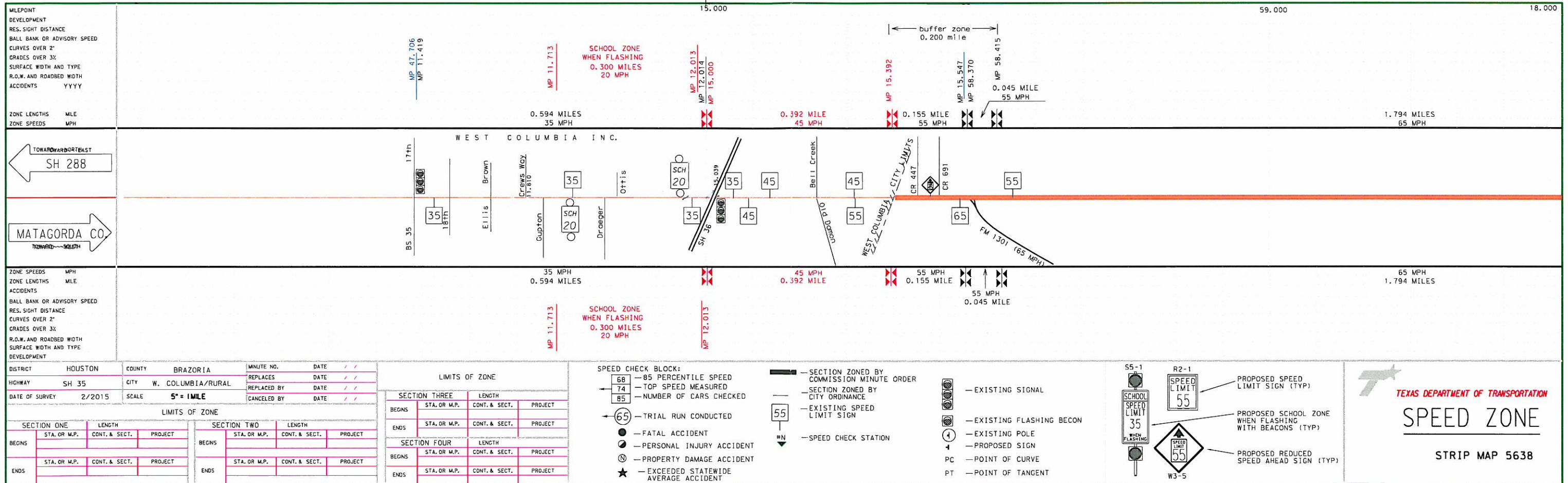
Kelli R. Kuban
City Secretary

Gavin K. Kerner
Mayor

188-07

1412-02

179-5



MILEPOINT
 DEVELOPMENT
 RES. SIGHT DISTANCE
 BALL BANK OR ADVISORY SPEED
 CURVES OVER 2"
 GRADES OVER 3%
 SURFACE WIDTH AND TYPE
 R.O.W. AND ROADBED WIDTH
 ACCIDENTS YYY

ZONE SPEEDS MPH
 ZONE LENGTHS MILE
 ACCIDENTS
 BALL BANK OR ADVISORY SPEED
 RES. SIGHT DISTANCE
 CURVES OVER 2"
 GRADES OVER 3%
 SURFACE WIDTH AND TYPE
 DEVELOPMENT

DISTRICT HOUSTON COUNTY BRAZORIA
 HIGHWAY SH 35 CITY W. COLUMBIA/RURAL
 DATE OF SURVEY 2/2015 SCALE 5" = 1 MILE

LIMITS OF ZONE			
SECTION ONE	LENGTH	SECTION TWO	LENGTH
BEGINS STA. OR M.P.	CONT. & SECT.	BEGINS STA. OR M.P.	CONT. & SECT.
ENDS STA. OR M.P.	PROJECT	ENDS STA. OR M.P.	PROJECT
SECTION THREE		SECTION FOUR	
BEGINS STA. OR M.P.	LENGTH	BEGINS STA. OR M.P.	LENGTH
ENDS STA. OR M.P.	CONT. & SECT.	ENDS STA. OR M.P.	CONT. & SECT.
SECTION FIVE		SECTION SIX	
BEGINS STA. OR M.P.	LENGTH	BEGINS STA. OR M.P.	LENGTH
ENDS STA. OR M.P.	CONT. & SECT.	ENDS STA. OR M.P.	CONT. & SECT.

LIMITS OF ZONE			
SECTION THREE	LENGTH	SECTION FOUR	LENGTH
BEGINS STA. OR M.P.	CONT. & SECT.	BEGINS STA. OR M.P.	CONT. & SECT.
ENDS STA. OR M.P.	PROJECT	ENDS STA. OR M.P.	PROJECT
SECTION FIVE		SECTION SIX	
BEGINS STA. OR M.P.	LENGTH	BEGINS STA. OR M.P.	LENGTH
ENDS STA. OR M.P.	CONT. & SECT.	ENDS STA. OR M.P.	CONT. & SECT.

SPEED CHECK BLOCK:
 68 - 85 PERCENTILE SPEED
 74 - TOP SPEED MEASURED
 85 - NUMBER OF CARS CHECKED
 65 - TRIAL RUN CONDUCTED
 ● - FATAL ACCIDENT
 ● - PERSONAL INJURY ACCIDENT
 ● - PROPERTY DAMAGE ACCIDENT
 ★ - EXCEEDED STATEWIDE AVERAGE ACCIDENT

SECTION ZONED BY COMMISSION MINUTE ORDER
 SECTION ZONED BY CITY ORDINANCE
 EXISTING SPEED LIMIT SIGN
 SPEED CHECK STATION

EXISTING SIGNAL
 EXISTING FLASHING BECON
 EXISTING POLE
 PROPOSED SIGN
 POINT OF CURVE
 POINT OF TANGENT

PROPOSED SPEED LIMIT SIGN (TYP)
 PROPOSED SCHOOL ZONE WHEN FLASHING WITH BEACONS (TYP)
 PROPOSED REDUCED SPEED AHEAD SIGN (TYP)

TEXAS DEPARTMENT OF TRANSPORTATION
SPEED ZONE
 STRIP MAP 5638